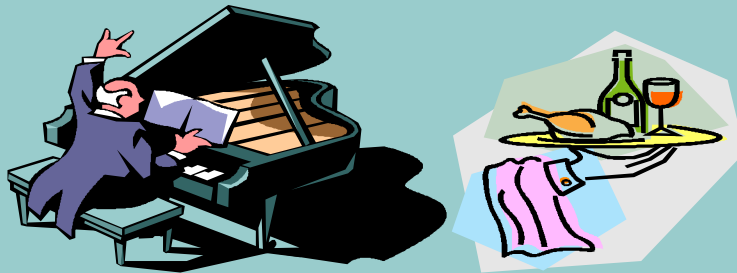


THE PROVINCIAL GRAND LODGE OF SOMERSET

INVITES YOU TO AN INFORMAL LUNCH-TIME AND AFTERNOON OF

Good Food, Good Music and Good Conversation



AT

The Square & Compass

ON

SUNDAY SEPTEMBER 19

FROM

12.00noon - 4.00pm

**TICKETS @ £20 PER HEAD
CARVERY & DESSERT**

THE INVITATION IS OPEN TO WIVES, FRIENDS AND POTENTIAL MEMBERS

***THE SQUARE & COMPASS IS LOCATED AT WINDMILL HILL, ASHILL, NR.
ILMINSTER (JUST OFF THE A358)***

CAPACITY IS LIMITED TO 140 - BOOK EARLY WITH:

JOHN COLE
jcole1701@sky.com